



# **Impact of Resource Conservation Techniques on Soil Properties in Sub Montane North Western Himalayas**

**Vivak M. Arya<sup>a\*</sup>**

<sup>a</sup> *Division of Soil Science, FoA, SKUAST-Jammu, India.*

## **Author's contribution**

The sole author designed, analysed, interpreted and prepared the manuscript.

## **Article Information**

DOI: 10.9734/IJPSS/2023/v35i173234

## **Open Peer Review History:**

This journal follows the Advanced Open Peer Review policy. Identity of the Reviewers, Editor(s) and additional Reviewers, peer review comments, different versions of the manuscript, comments of the editors, etc are available here: <https://www.sdiarticle5.com/review-history/102818>

**Original Research Article**

**Received: 04/05/2023**

**Accepted: 06/07/2023**

**Published: 07/07/2023**

## **ABSTRACT**

The present study highlights the impact of resource conservation techniques on soil properties in sub montane north western Himalayas. The continued maintenance of fertile soil is essential in order to meet basic human needs. The topography of the region ranging from gently sloping to moderately-steep sloping retards the vertical development of soils. The study was conducted in the Merth village of state J&K. The experiment was laid out to compare the impact of resource conservation techniques on the runoff and sediment yield in two different catchment areas (one with sandy loam texture and other with clay loam texture) in monsoon season. The slope of the catchment areas varies from 3-6%. The increase in available nitrogen in sandy and clay loam can be attributed because of the increase in root biomass under resource conservation techniques. Addition of root biomass and litter fall in cover crop indirectly through the process of mineralization increases the availability of available nitrogen. The soils of submontane *Shivaliks* are under tremendous stress because of high soil erosivity and poor soil management practices. The study strongly recommends adoption of resource conservation techniques for reducing soil erosion & water conservation in submontane *Shivaliks*.

\*Corresponding author: E-mail: [dr.arya999@gmail.com](mailto:dr.arya999@gmail.com);

**Keywords:** Soil properties; mineralization; Shivaliks; available nitrogen.

## 1. INTRODUCTION

Soil is considered as one of the world's limited, non-renewable resource. Under cropland conditions, it takes between 200 to 1000 years for 2.5 cm of topsoil to form [1]. The continued maintenance of fertile soil is essential in order to meet basic human needs. In India land degradation is a common problem in the lower Shivaliks of Jammu, extending from district Kathua in the southeast to Rajouri in the northwest. It is a dry semi-hilly belt, locally known as kandi. Increased human and cattle population pressure and decreased the size of land holdings in the area have resulted in the indiscriminate felling of trees, removal of bushes and grazing and browsing. It has led to unabated soil loss and land degradation. Soil erosion by water is the root cause of ecological degradation in these areas. The estimated annual soil loss from the Shivaliks or sub-montane region of Jammu is more than 80 tonnes ha<sup>-1</sup>. The physiographic characteristic of the area is itself a major factor contributing to the continuous degradation of these catchments. The weak lithology of the lower Shivaliks consisting of rocks like sandstone, conglomerate, shale, silt stone and limestone are relatively easily weatherable and therefore prone to quick erosion. The topography of the region ranging from gently sloping to moderately-steep sloping retards the vertical development of soils. These highly erodible soils are poor in nutrients and low in organic carbon contributing to poor productivity [2]. Therefore different resource conservation techniques are necessary in these areas to limit the soil loss to a tolerable limit. The different resource conservation techniques are designed to intercept sediments, reduce runoff velocity, facilitate infiltration of runoff water, transmit runoff at non erosive power and reduces sedimentation of waterways, streams, and rivers [3]. Beside this, these also have role in improving different properties (physical and chemical) and nutrient status of the soil.

## 2. MATERIALS AND METHODS

The study was conducted in the Merth village of state J&K. The village is situated in Kathua district, which lies between 32° 17' to 32° 55' North latitude and 75° 70' to 76° 16' East longitude. The district is bound in the south by Gurdaspur district of the Punjab, in the east by Chamba district of Himachal Pradesh and in the

north by Doda, Samba, and Udhampur district of J& K state. The district comprises of 5 tehsils viz Kathua, Hiranaga, Basohli, Billawar and Bani. Merth village comes under the tehsil Kathua. The total geographical area of Merth village is 400 ha and situated at a distance of 20 km from its district headquarter. It is located at 32°27'36.11" N latitude and 75°27'59.66" E longitude with an elevation of 425 m above mean sea level. The total area of both the investigated watershed was 49.6 acre.

### 2.1 Topography and Agro Climatic Characteristics

Kathua district varies in topography and terrain. The plain areas are formed by part area of the district constituting Kathua and Hiranagar tehsils below the national highway. The area in the north side of the national highway upto Dhar – Udhampur road comprises Kandi belt whereas the remaining part of the district, constituting Billawar, Bashohli and Bani tehsils, is known as mountainous terrain. The climate of the district also varies significantly from very hot in its plain and Kandi belt to severe cold in the hills. The summer months from April to June are very hot with mercury touching even 45°C, whereas the temperature in winter months *i.e.* during December and January ranges between 5°C and 15°C. The rainfall in the region is relatively poor. The monsoon reach the district between the months of June and August. The district gets maximum rainfall in the month of July and August. The average rainfall ranges between 200 and 1200 mm for different regions. Bani, Bashohli and Billawar areas receive more rainfall than other areas. The average rainfall of the Merth village is 456 mm with relative humidity of 90.66%.

### 2.2 Soils and Vegetation

The soil of district Kathua varies between alluvial sandy loam in Plains of Hiranagar and Kathua to gravel in the Kandi area of the district. The main crops grown in the district are maize and wheat followed by paddy. Other crops grown in the district are millets, oil seeds, pulses and vegetables. Wheat and paddy constitute the staple food in plain tehsils, namely; Kathua and Hiranagar where as maize in hilly tehsils *i.e.* Billawar, Bashohli and Bani. The natural vegetation consists of trees, shrubs, climbers.

The total cropped area in the district is 1.29 lakh ha. with merely 33.16% gross irrigated area.

### 2.3 Experimental Details

The experiment was laid out to compare the impact of resource conservation techniques on the runoff and sediment yield in two different catchment areas (one with sandy loam texture and other with clay loam texture) in monsoon season. The slope of the catchment areas varies from 3-6%.

### 2.3.1 Various resource conservation techniques used in maize – wheat system:

- Contour plowing
- Terrace farming
- Perimeter runoff control
- Cover crop (Black gram, var. Uttara)
- Agrostological measures (Bhabar, Khuskhus, Bermuda grass, Vetiver, Sesbania grandiflora, Eleplant grass)
- Overgrazing prevention

### 2.3.2 Meteorological data recorded during the research programme

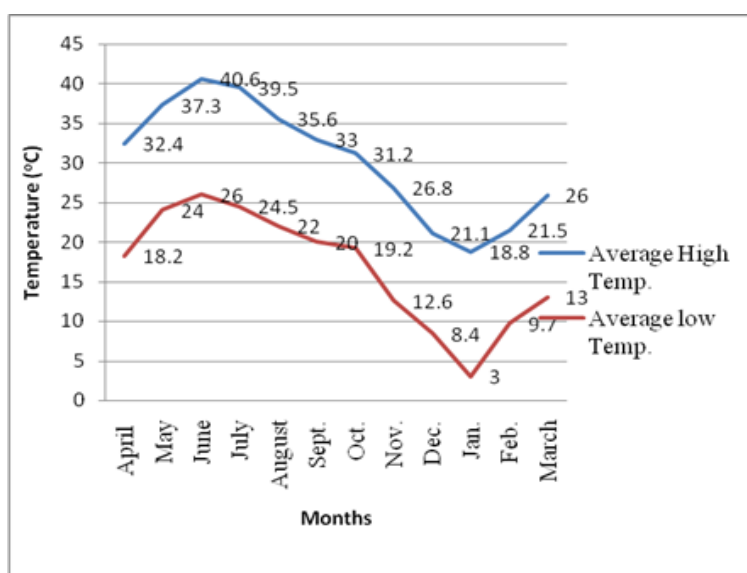


Fig. 1. Average max. and min. temperature (°c) from April 2018 – March 2019

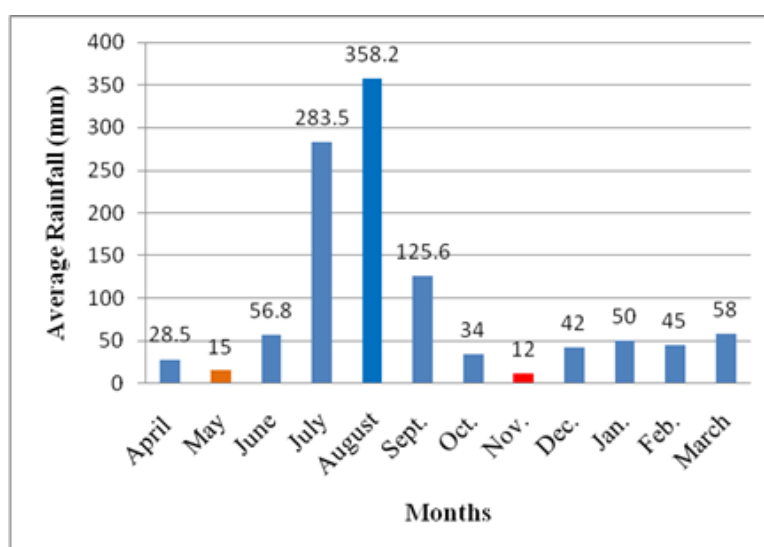


Fig 2. Average rainfall recorded from April 2018 – March 2019

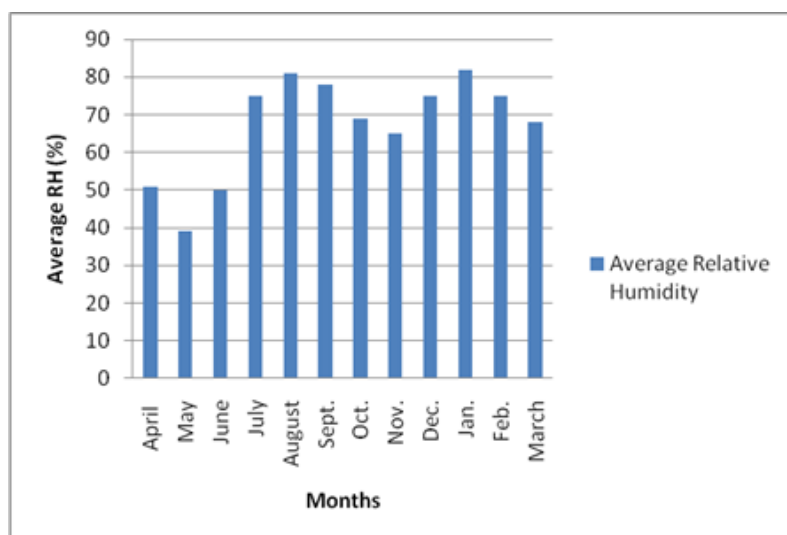


Fig. 3. Average relative humidity from April 2018 – March 2019

### 2.3.3 Collection and preparation of soil samples

The composite surface soil samples were collected randomly from the both the watershed areas by using GPS. Collection of soil samples were based on the different types of conservation

techniques used. The collected soil samples were then air-dried, mixed well and passed through a 2 mm sieve for the analysis of selected soil physical and chemical properties. Soil loss and runoff from these catchment areas was estimated through a proportionate runoff collection system during rainfall events.

### 2.3.4 Analysis of soil samples

Table 1. Methods employed for the determination of various soil physico-chemical properties

Parameters	Method	Reference
pH	Potentiometric method	Jackson, [4]
Electrical conductivity ( $\text{dSm}^{-1}$ )	Salt bridge method	Jackson, [4]
Organic carbon ( $\text{g kg}^{-1}$ )	Rapid titration method	Walkley & Black, [5]
Available nitrogen ( $\text{kg ha}^{-1}$ )	Kjeldahl method	Subbiah & Asija, [6]
Available phosphorous ( $\text{kg ha}^{-1}$ )	Olsen's method	Olsen <i>et al.</i> , [7]
Available potassium ( $\text{kg ha}^{-1}$ )	Flame photometry method	Piper, [8]

Table 2. Initial chemical properties of the experimental site

Parameters	Sandy loam	Clay loam
pH	7.2	6.4
Electrical conductivity ( $\text{dSm}^{-1}$ )	0.60	0.50
Organic carbon ( $\text{g kg}^{-1}$ )	4.6	5.2
Available N ( $\text{kg ha}^{-1}$ )	230	250
Available P ( $\text{kg ha}^{-1}$ )	9	11
Available K ( $\text{kg ha}^{-1}$ )	140	160

## 2.4 Statistical Analysis

For evaluating the influence of various resource conservation techniques on soil properties, analysis was done by using analysis of variance techniques (ANOVA) and by applying DMRT test. The SPSS Software version 14.0 was used for analysis.

### 3. RESULTS AD DISCUSSION

#### 3.1 Effects of Resource Conservation Techniques on Selected Chemical Properties of Soil

**Soil pH:** Soil pH among various resource conservation techniques in sandy loam varied between 7.33 -7.84 and in clay loam varied between 6.64 - 7.73. In both the soils the minimum and maximum pH values were recorded from overgrazing prevention and cover crop respectively (Tables 3 and 4). There was no significant difference in the pH values between contour plowing & terrace farming and perimeter runoff control & overgrazing prevention in sandy loam soil and between terrace farming and contour plowing in clay loam soil. The lower mean value of soil pH in overgrazing prevention could be attributed to high soil erosion which leads to loss of basic nutrients, relatively lower base saturation percentage and lower soil organic matter content. Studies by various researchers also showed that organic carbon was positively and significantly associated with soil pH, [9-13].

**Soil EC:** As the statistical result indicated, EC of both the soils (sandy loam and clay loam) did not significantly affected by resource conservation techniques. Relatively high ( $1.41 \text{ dSm}^{-1}$  in sandy loam and  $1.33 \text{ dSm}^{-1}$  in clay loam) and low mean value of EC ( $0.37 \text{ dSm}^{-1}$  in sandy loam and  $0.33 \text{ dSm}^{-1}$  in clay loam) was recorded in overgrazing prevention and perimeter runoff control respectively. The high electrical conductivity values in overgrazing prevention compared to other resource conservation techniques could be due to the upward movement of the soluble salts to the surface, through capillary rise of water under prevailing hyperthermic temperature regime in submontane Shivaliks soil, Sondhi [14] and Nazir [15]. Other workers have also reported low value of electrical conductivity where resource conservation techniques were adopted in surface soil, Burle and Mielniczuk [16]; Verhulst et al. [17]; Verhulst et al. [18]; Singh [19]; Baishya and Sharma [20].

**Soil organic carbon:** The mean value of soil OC among different resource conservation techniques ranges between  $8.14 \text{ g kg}^{-1}$  and  $2.11 \text{ g kg}^{-1}$  in sandy loam whereas between  $8.25 \text{ g kg}^{-1}$  and  $2.37 \text{ g kg}^{-1}$  in clay loam (Table 3 and Table 4). The difference in organic carbon content in all the resource conservation techniques was

statistically significant. Highest mean value of soil organic carbon a ( $8.14 \text{ g kg}^{-1}$  in sandy loam and  $8.25 \text{ g kg}^{-1}$  in clay loam) was recorded in cover crop and lowest ( $2.11 \text{ g kg}^{-1}$  in sandy loam and  $2.37 \text{ g kg}^{-1}$  in clay loam) in overgrazing prevention. The high value of soil organic carbon in cover crop could be attributed due to addition of root biomass and leaf litter. The root biomass might have increase the soil organic carbon accumulation in the subsurface layer. The lowest soil organic carbon content in overgrazing prevention may be due to poor growth, high runoff and high soil erosion, Hassink [21] and Sollins et al. [22]. Soil organic carbon was highest in cover crop as compared to other resource conservation techniques and results were consistent with the findings of Nagaraja et al. [23] and Kumar et al. [24]. This might be due to the production and return of higher amount of litter under cover crop. Similar results were also reported by Bhat et al. [25]; Feyissa et al. [26]; Du et al. [27]; Araujo et al. [28].

Despite the lower value of soil organic carbon at the initial stage, its content was observed higher in cover crop as compared to other resource conservation techniques in both the soil which is an agreement with other studies, Alvarez et al. [29]; Halvorson et al. [30]; Alvarez and Steinbach [31]. The introduction of cover crops in rotation generally significantly increases soil organic matter as reported by Smith et al. [32]; Drinkwater et al. [33]; Lal [34]. The results in our studies confirm the importance of introducing cover crops in crop rotation for maintaining or increasing soil organic carbon in loamy texture even under submontane condition. The study is in confirmative with the work of Drinkwater et al. [33] and So et al. [35], that legume cover crop in a crop rotation may easily conserve or increase soil organic matter which in turn increases the soil organic carbon.

**Available nitrogen:** Statistically, significant difference was observed in available nitrogen of the soil samples taken from the areas under different resource conservation techniques in sandy loam whereas in clay loam no significant difference was found between contour plowing and perimeter runoff control. In both sandy loam and clay loam the mean value of available nitrogen was highest in cover crop (i.e.  $426.22 \text{ kg ha}^{-1}$  in sandy loam and  $440.10 \text{ kg ha}^{-1}$  in clay loam) and lowest in overgrazing prevention (i.e.  $148.95 \text{ kg ha}^{-1}$  in sandy loam and  $163.67 \text{ kg ha}^{-1}$  in clay loam).

**Table 3. Resource conservation techniques impact on selected soil chemical properties in sandy loam soil**

RCT	pH (Mean ± S.E)	EC (dSm <sup>-1</sup> ) (Mean ± S.E)	OC (g kg <sup>-1</sup> ) (Mean ± S.E)	Available N (Kg ha <sup>-1</sup> ) (Mean ± S.E)	Available P (Kg ha <sup>-1</sup> ) (Mean ± S.E)	Available K (Kg ha <sup>-1</sup> ) (Mean ± S.E)
CC	7.84 ± 1.21 <sup>a</sup>	0.46 ± 0.23 <sup>bc</sup>	8.14 ± 0.67 <sup>a</sup>	426.22 ± 75.71 <sup>a</sup>	28.52 ± 4.14 <sup>a</sup>	292.04 ± 37.34 <sup>a</sup>
AM	7.66 ± 0.07 <sup>ab</sup>	0.54 ± 0.19 <sup>b</sup>	6.89 ± 0.45 <sup>b</sup>	258.10 ± 34.81 <sup>c</sup>	24.43 ± 3.93 <sup>b</sup>	256.31 ± 34.43 <sup>b</sup>
TF	7.53 ± 0.07 <sup>bc</sup>	0.39 ± 0.19 <sup>c</sup>	5.87 ± 0.52 <sup>c</sup>	298.65 ± 49.93 <sup>b</sup>	14.05 ± 1.93 <sup>c</sup>	204.47 ± 34.63 <sup>c</sup>
CP	7.51 ± 0.07 <sup>bc</sup>	0.44 ± 0.21 <sup>bc</sup>	3.46 ± 1.04 <sup>d</sup>	216.42 ± 23.48 <sup>d</sup>	11.49 ± 2.02 <sup>d</sup>	139.89 ± 15.58 <sup>d</sup>
PRC	7.40 ± 0.05 <sup>c</sup>	0.37 ± 0.16 <sup>c</sup>	3.60 ± 0.71 <sup>d</sup>	195.45 ± 9.10 <sup>e</sup>	12.43 ± 1.45 <sup>d</sup>	125.51 ± 14.25 <sup>e</sup>
OGP	7.33 ± 0.13 <sup>c</sup>	1.41 ± 0.34 <sup>a</sup>	2.11 ± 0.64 <sup>e</sup>	148.95 ± 31.41 <sup>f</sup>	9.08 ± 1.36 <sup>e</sup>	95.08 ± 8.48 <sup>f</sup>

Note: Means with the same letter are not significantly different

RCT (Resource conservation techniques), CC (Cover crop), AM (Agrostological measures), TF (Terrace farming), CP (Contour plowing), PRC (Perimeter runoff control), OGP (Overgrazing prevention)

**Table 4. Resource conservation techniques impact on selected soil chemical properties in clay loam soil**

RCT	pH (Mean ± S.E)	EC(dSm <sup>-1</sup> ) (Mean ± S.E)	OC (g kg <sup>-1</sup> ) (Mean ± S.E)	Available N (Kg ha <sup>-1</sup> ) (Mean ± S.E)	Available P (Kg ha <sup>-1</sup> ) (Mean ± S.E)	Available K (Kg ha <sup>-1</sup> ) (Mean ± S.E)
CC	7.73 ± 0.12 <sup>a</sup>	0.44 ± 0.21 <sup>bc</sup>	8.25 ± 0.66 <sup>a</sup>	440.10 ± 74.42 <sup>a</sup>	30.29 ± 4.79 <sup>a</sup>	309.70 ± 46.60 <sup>a</sup>
AM	7.44 ± 0.07 <sup>b</sup>	0.52 ± 0.19 <sup>b</sup>	7.02 ± 0.41 <sup>b</sup>	271.25 ± 31.47 <sup>c</sup>	26.94 ± 3.75 <sup>b</sup>	273.08 ± 33.20 <sup>b</sup>
TF	7.18 ± 0.12 <sup>c</sup>	0.35 ± 0.17 <sup>cd</sup>	6.03 ± 0.43 <sup>c</sup>	310.87 ± 46.01 <sup>b</sup>	16.12 ± 1.95 <sup>c</sup>	225.50 ± 39.46 <sup>c</sup>
CP	7.18 ± 0.11 <sup>c</sup>	0.41 ± 0.19 <sup>cd</sup>	3.70 ± 0.97 <sup>d</sup>	235.66 ± 26.44 <sup>d</sup>	13.43 ± 1.97 <sup>d</sup>	160.35 ± 18.79 <sup>d</sup>
PRC	6.84 ± 0.98 <sup>d</sup>	0.33 ± 0.13 <sup>d</sup>	3.78 ± 0.76 <sup>d</sup>	223.63 ± 17.20 <sup>d</sup>	14.26 ± 1.82 <sup>d</sup>	148.85 ± 20.59 <sup>d</sup>
OGP	6.64 ± 0.19 <sup>e</sup>	1.33 ± 0.27 <sup>a</sup>	2.37 ± 0.55 <sup>e</sup>	163.67 ± 32.54 <sup>e</sup>	11.41 ± 1.76 <sup>e</sup>	126.33 ± 15.49 <sup>e</sup>

Note: Means with the same letter are not significantly different

RCT (Resource conservation techniques), CC (Cover crop), AM (Agrostological measures), TF (Terrace farming), CP (Contour plowing), PRC (Perimeter runoff control), OGP (Overgrazing prevention)

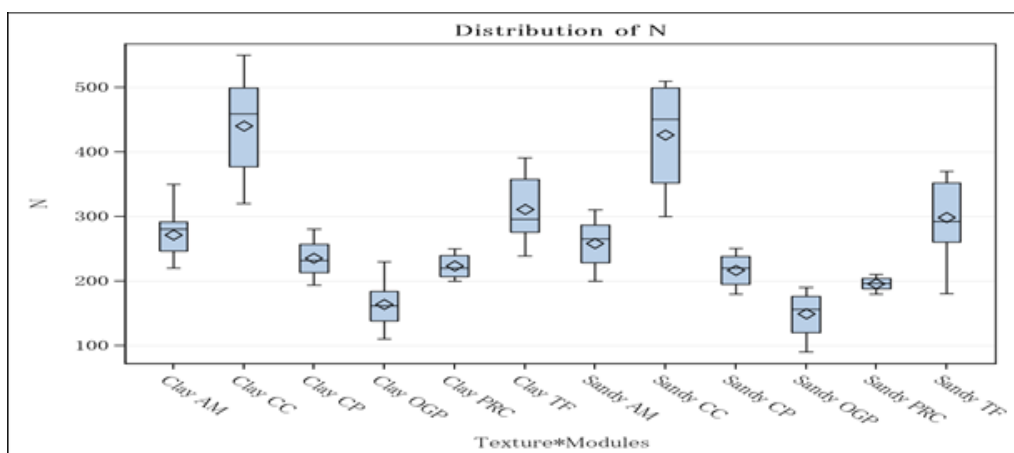
The increase in available nitrogen in sandy and clay loam can be attributed because of the increase in root biomass under resource conservation techniques. Addition of root biomass and litter fall in cover crop indirectly through the process of mineralization increases the availability of available nitrogen, Jat [36] Drinkwater *et al.* [33]; Sainju *et al.* [37]; Alvarez and Steinbach [31] Alama [38]. Our results and studies by several other researchers shows that soil organic carbon content and available nitrogen are positively correlated with each other. Beside this cover crops (Black gram etc.) also has role in biological nitrogen fixation, thus increases the pool of easily mineralized organic N as revealed by Murrell [39] through its roots and root exudates.

**Available phosphorous:** Available P among different resource conservation techniques was highly variable. It varies from 9.08 to 28.52 kg ha<sup>-1</sup> in sandy loam and 11.41 to 30.29 kg ha<sup>-1</sup> in clay loam (Tables 3 & 4 and Fig. 5). The mean value of available phosphorous was found highest in cover crop and lowest in overgrazing prevention in both sandy and clay loam soils. From the studies it was Recorded that availability of phosphorous has been significantly affected by resource conservation techniques, it might be due to changes in soil pH, restoration of soil organic carbon and maintenance of externally added P by reducing soil erosion and runoff.

Accumulation of organic matter through cover crop enhances the availability of phosphorous as 30 – 35% of phosphorous comes through the organic pool of the soil, Arya [40]; Cao *et al.* [41];

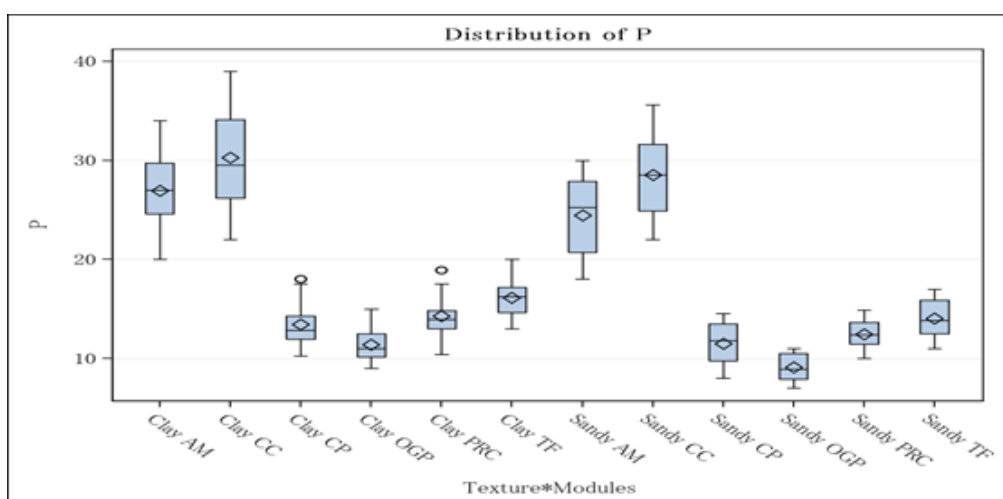
Arya *et al.* [42]. Addition of organic matter through incorporation of cover crop in crop rotation or recycling of crop residues in the soil, influence the reaction of phosphate and its availability to plants. With the addition of organic matter the process of mineralization of phosphorous is enhanced and value of bonding energy (K) L Kg<sup>-1</sup> decreased, Arya [40]. Addition of organic matter through any mean *viz.* cover crop, root biomass, varieties, composite varieties help in the increase of soil solution inorganic phosphorous through mineralization of organic phosphorous and solubilization of native phosphorous compounds and its effect was significant, Christine Alewell [43] Vig and Chand [44]; Hiradate and Uchidia [45]; Guppy *et al.* [46] L. Reijnders [47].

**Available potassium:** The concentration of available potassium in both sandy loam and clay loam was significantly affected by the resource conservation techniques. The highest concentration was recorded from cover crop (i.e. 292.04 kg ha<sup>-1</sup> in sandy loam and 309.70 kg ha<sup>-1</sup> in clay loam) and lowest from overgrazing prevention ((i.e. 95.08 kg ha<sup>-1</sup> in sandy loam and 126.33 kg ha<sup>-1</sup> in clay loam). This might be due to very low erosion impact in cover crop. Studies by Kyaruzi [48] revealed that effective control of runoff improves the content of available potassium. This increase in cover crop could also be attributed because of the high root biomass compared to overgrazing prevention. Addition of root biomass and litter fall indirectly enhances the availability of available potassium through the process of mineralization, Das [49], Drinkwater *et al.* [33]; Sainju *et al.* [37]; Alvarez and Steinbach [31].



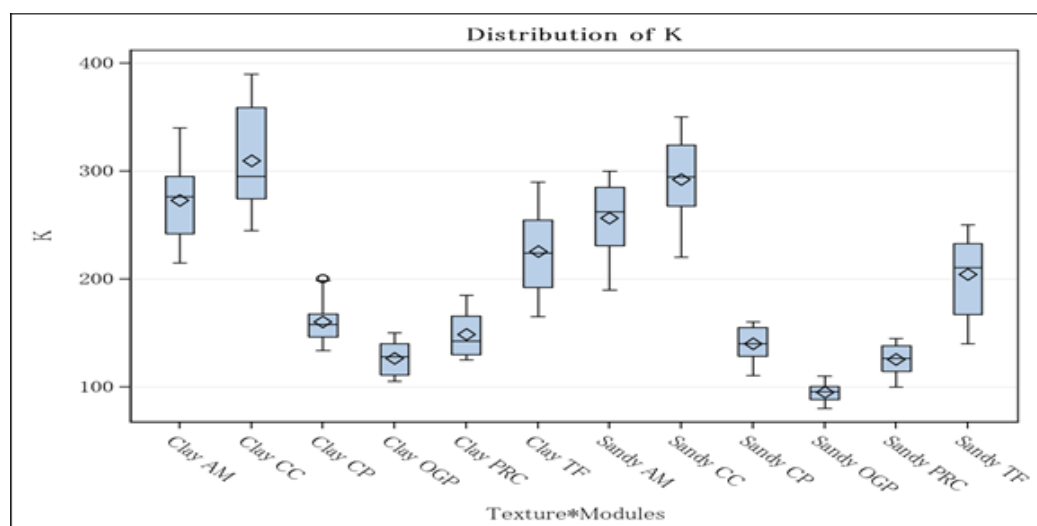
**Fig. 4. Distribution of available nitrogen (kg ha<sup>-1</sup>) under different conservation techniques in sandy & clay loam**

Note: AM (Agrostological measures), CC (Cover crop), CP (Contour plowing), OGP (Overgrazing prevention), PRC (Perimeter runoff control), TF (Terrace farming)



**Fig. 5. Distribution of available phosphorous (kg ha<sup>-1</sup>) under different conservation techniques in sandy & clay loam**

Note: AM (Agrostological measures), CC (Cover crop), CP (Contour plowing), OGP (Overgrazing prevention), PRC (Perimeter runoff control), TF (Terrace farming)



**Fig. 6. Distribution of potassium (K) (kg ha<sup>-1</sup>) under different resource conservation techniques in sandy and clay loam**

Note: AM (Agrostological measures), CC (Cover crop), CP (Contour plowing), OGP (Overgrazing prevention), PRC (Perimeter runoff control), TF (Terrace farming)

#### 4. CONCLUSION

The study concluded that resource conservation strategies should be used in the submontane Shivaliks. Because these methods not only reduce runoff and sediment yield, but they also help to maintain soil nutritional status and other physical and chemical qualities. Among the various resource conservation techniques used (*viz.* cover crop, agrostological measures, terrace farming, contour plowing, perimeter runoff control and over grazing prevention), cover crop was

most efficient in trapping detached sediments and reducing velocity and volume of overland flow. The carbon content increased as a result of the application of resource conservation measures, which is an excellent signal because carbon serves as a link between nutrients, water, and soil. Resource conservation techniques exerts the least of soil disturbance and adds root biomass along with litter fall contributes to more soil aggregation, accumulation of nutrients and soil organic carbon, better physical condition of the soil along with good soil quality. The soils of



submontane *Shivaliks* are under tremendous stress because of high soil erosivity and poor soil management practices. The study strongly recommends adoption of resource conservation techniques for reducing soil erosion & water conservation in submontane *Shivaliks*.

## COMPETING INTERESTS

Author has declared that no competing interests exist.

## REFERENCES

1. Pimentel D, Harvey C, Resoudarmo P, Sinclair K, Kurz D, McNair M, Crist S, Sphpritz L, Fitton L, Safouri R, Blair R. Environmental and economic costs of soil erosion and conservation benefits. *Science*. 1995;267:1117-23.
2. Sharma V, Mir SH, Arora S. Assessment of fertility status of erosion prone soils of Jammu Shivaliks. *Journal of Soil and Water Conservation*. 2009;8(1): 37- 41.
3. Blanco R, Lal R. *Principles of Soil Conservation and Management*, Springer, New York, NY, USA; 2008.
4. Jackson ML. *Soil Chemical Analysis*, Prentice Hall of India, Private limited, New Delhi. 1973;38-56.
5. Walkely A, Black IA. An examination of the Degtjareff method for determining soil organic matter, and a proposed modification of the chromic acid titration method. *Soil Science*. 1934;37(1):29-38.
6. Subbiah BV, Asija GL. A rapid procedure for the estimation of available nitrogen in soil. *Current Science*. 1956;25:259-260.
7. Olsen SR, Cole CV, Watanabe FS, Dean LA. Estimation of available phosphorous by extraction with sodium bicarbonate. *USDA*. 1954;939.
8. Piper CS. *Soil and Plant analysis*. Hans Publisher, Bombay; 1966.
9. Habtamu K, Husien O, Haimanote B, Tegeun E. The effect of land use on plant nutrient availability and carbon sequestration , 208-219. *Proc. of the 10th conference on "Natural Resource Management"* March 25-27. Ethiopian Society of Soil Science, Addis Ababa; 2009.
10. Million A. Characterization of indigenous stone bunding (Kab) and its effect on crop yield and soil productivity at Mesobit-Gedba, North Showa Zone of Amhara Region. Master of Science Thesis, Alemaya University, Ethiopia. 2003;45–54.
11. Haweni H. Effect of soil and water conservation on selected soil characteristics in Dimma Watershed, Central Ethiopia. MSc Thesis, Addis Ababa University, Ethiopia. 2015;99.
12. Worku H. Impact of physical soil and water conservation structure on selected soil physicochemical properties in Gondar Zuriya Woreda. *Resources Environment*. 2017;7(2): 40–48.
13. Solomon H, James L, Woldeamilak B. Soil and water conservation effect on soil properties in the Middle Silluh Valley, northern Ethiopia. *Int Soil Water Conserv Res*. 2017;5:231–240.
14. Sondhi AK. Soil resources inventory of Nara Dada Manshi watershed area of Hoshiarpur district. (M.Sc. Thesis). Punjab agricultural University. Ludhiana, Punjab; 1992.
15. Nazir GR. Characterization and management of salt affected soils of Jammu district ; 1993 Jammu, India.
16. Burle ML, Mielniczuk J. Effect of cropping systems on soil chemical characteristics, with emphasis on soil acidification. *Plant Soil*. 1997;190:309 – 316.
17. Verhulst N, Govaerts B, Verachtert E, Mezzalama M, Wall PC, Chocobar A, Deckers J, Sayre KD. Conservation agriculture, improving soil quality for sustainable production systems. In: Lal R., Stewart, B.A.(Eds.). *Boca Raton, FL, USA*. 2010a;137-208.
18. Verhulst N, Kienle F, Sayre KD, Deckers J, Raes D, Limon- Ortega A, Tijerina – Chavez L, Govaerts B. Soil quality as affected by tillage residue management in a wheat- maize irrigated bed planting system. *Plant Soil*. 2010b;340:453-466.
19. Singh AK. Soil quality parameters as influenced by management practices in rice – wheat and maize- wheat cropping system. 19th world congress of soil science, soil solutions for a changing world, Brisbane, Australia. 2010;1-6.
20. Baishya J, Sharma S. Analysis of physico-chemical properties of soil under different land use system with special reference to agro ecosystem in Dimoria Development Block of Assam, India. *International Journal of Scientific Research Education*. 2017;5(6):6526- 6532.

21. Hassink J. Density fraction of soil macroorganic matter and microbial biomass as prediction of C and N mineralization. *Soil Biology and Biochemistry*. 1995;27:1099-08.
22. Sollins P, Homann P, Caldwell BA. Stabilization and destabilization of soil organic matter: mechanisms and controls. *Geoderma*. 1996;74:65-105.
23. Nagaraja MS, Bhardwaj AK, Reddy GVP, Parama VRR, Kaphaliya B. Soil carbon stocks in natural and man made agri-hortilivipastural land use systems in dry zones of Southern India. *Journal of Soil and Water Conservation*. 2016;15(3):258-264.
24. Kumar V, Sharma KR, Arya VM, Sharma V. Land use effects on structural stability and soil organic carbon in the submontane areas of north- western Himalayas, India. *Journal of Soil and Water Conservation*. 2018;17(2):117-122.
25. Bhat JA, Kumar M, Negi AK, Pala NA, Todaria NP. Soil organic carbon stock and sink potential in high mountain temperate Himalayan forests of India. *International Journal of Current Research*. 2012;4(12):206- 209.
26. Feyissa A, Soromessa T, Argaw M. Forest carbon stocks and variations along altitudinal gradients in Egdu forest: implications of managing forests for climate change mitigation. *Science, Technology and Arts Research Journal*. 2013;2(4):40- 46.
27. Du B, Kang H, Pumpanen J, Zhu P, Yin S, Zou Q, Wang Z, Kong F, Liu C. Soil organic carbon stock and chemical composition along an altitude gradient in the Lushan Mountain, subtropical China. *Ecological Research*. 2014;29(3):433-439.
28. Araujo MA, Zinn YL, Lal R. Soil parent material, texture and oxide contents have little effects on soil organic carbon retention in tropical highlands. *Geoderma*. 2017;300:1-10.
29. Alvarez R, Diaz RA, Barbero N, Santanatoglia OJ, Blotta L. Soil organic carbon microbial biomass and CO<sub>2</sub>-C production from three tillage systems. *Soil and Tillage Research Journal*. 1995;33:17-28.
30. Halvorson AD, Wienhold BJ, Black AL. Tillage, nitrogen, cropping system effects on soil carbon sequestration. *Soil Science Society of America Journal*. 2002;66:906-912.
31. Alvarez R, Steinbach HS. Review of the effects of tillage systems on some soil physical properties, water content, nitrate availability and crops yield in the Argentine Pampas. *Soil and Tillage Research Journal*. 2009;104:1-15.
32. Smith P, Powlson DS, Glendinning MJ, Smith JU. Potential for carbon sequestration in European soils: preliminary estimates for five scenarios using results from long term experiments. *Global Change Biology*. 1997;3:67-79.
33. Drinkwater LE, Wagoner P, Sarrantonio M. Legume based cropping systems have reduced carbon and nitrogen losses. *Nature*. 1998;396:262- 265.
34. Lal R. Soil carbon sequestration to mitigate climate change. *Geoderma*. 2004;123: 1-22.
35. So HB, Dalal RC, Chan KY, Menzies NM, Freebairn DM. Potential of conservation tillage to reduce carbon dioxide emission in Australian soils. In: Mohtar, D.E., Steinhardt, G.C. (Eds.), *Sustaining the Global Farm. Selected papers from the 10th International Soil Conservation Organization Meeting*. 2001;821-826.
36. Jat, Shankar, Parihar, C.M., Singh, Aditya, Kumar, Asheesh, Meena, Har 2012 Resource conserving techniques and nitrogen use efficiency in different cropping systems In book: *Compendium of deliverables of the conservation agriculture course (pp.5-10) Chapter: Resource conserving techniques and nitrogen use efficiency in different cropping systems* Publisher: CIMMYT, Mexico Editors: Nele Verhulst, Juan Herrera, Amor Yahyaoui, Bram Govaerts.
37. Sainju UM, Senwo ZN, Nyakatawa EZ, Tazisong IA, Reddy KC. Soil carbon and nitrogen sequestration as effected by long term tillage, cropping systems, and nitrogen fertilizer sources. *Agriculture Ecosystem and Environment*. 2008;127 :234- 240.
38. Md. Khairul Alama, Richard W. Bella , M.E. Haquea , M.A. Islamc , M.A. Kadera, 2020 Soil nitrogen storage and availability to crops are increased by conservation Field crops Research Vol.250 (2020) 107764.
39. Murrell TS. *The Science Behind the Nitrogen Credit for Soybeans*, International Plant Nutrition Institute, Peachtree Corners, GA, USA; 2011. Available: <http://www.ipni.net>.

40. Arya VM. Effect of added phosphorous, organic matter and moisture regimes on phosphorous adsorption in soils of various agroclimatic zones of Jammu region. Ph.d. Thesis. Sher-e-Kashmir University of Agricultural Science and technology, Jammu. 2007;1-160.
41. Cao C, Jiang S, Zhang Y, Zhang F, Han X. Spatial variability of soil nutrients and microbiological properties after the establishment of leguminous shrub *Caragana microphylla* Lam. Plantation on sand dune in the horqin sandy land of northeast China. *Ecological Engineering*. 2011;37:1467-1475.
42. Arya VM, Sharma V, Vaid A, Sharma A, Bharat R, Sharma R, Bhat A, Jalali VK, Kukal SS. Phosphorous adsorption and desorption in agroclimatically disparate soils representing foothills of northwest Himalayas. *Indian Journal of Ecology*. 2016;(1):58-64.
43. Christine Alewell, Bruno Ringeval, Cristiano Ballabio, David A. Roinson, Panos Panagos & Pasqual Borrelli 2020 Global phosphorus shortage will be aggravated by soil erosion *Nature Communication* Volume 11, Article number: 4546
44. Vig AC, Chand M. Transformation of labile P in two alkaline soils amended with *Sesbania* at two moisture levels. *Tropic Agriculture*. 1993;70: 1-4.
45. Hiradate S, Uchida N. Effect of soil organic matter on pH dependent phosphate sorption by soils. *Japanese Journal of Soil Science and Plant Nutrition*. 2004;50(5):665-675.
46. Guppy CN, Menzies NW, Moody PW, Blamey FPC. Competition sorption reactions between phosphorous and organic matter in soil. *Australian Journal of Soil Research*. 2005;43:189 – 202.
47. L. Reijnders 2014 Phosphorus resources, their depletion and conservation, a review *Resource, Conservation and Recycling* Vol:93 :32-49
48. Kyaruzi L. Relationship between soil and landform derived land qualities and conservation agriculture practices in West Usambara Mountains, Tanzania. MSc thesis. Sokoine University of Agriculture, Tanzania. 2013;140.
49. Debarup Das, Jyotirmaya Sahoo, Md Basit Raza, Mandira Barman, Ruma Das 2022 Ongoing soil potassium depletion under intensive cropping in India and probable mitigation strategies: A review. *Agronomy for Sustainable Development* Vol.42 Article:4.

© 2023 Arya; This is an Open Access article distributed under the terms of the Creative Commons Attribution License (<http://creativecommons.org/licenses/by/4.0>), which permits unrestricted use, distribution, and reproduction in any medium, provided the original work is properly cited.

*Peer-review history:*

*The peer review history for this paper can be accessed here:*  
<https://www.sdiarticle5.com/review-history/102818>