



## **Area Assessment for Rice Crop in Thiruvarur District Assimilating Sentinel 1A Satellite Data**

**S. Satheesh<sup>aⓄ</sup>, S. Pazhanivelan<sup>b\*#</sup>, R. Kumaraperumal<sup>a†</sup>, S. Radhamani<sup>c‡</sup>,  
K. P. Rangunath<sup>b‡</sup> and N. S. Sudarmanian<sup>d†</sup>**

<sup>a</sup> Department of Remote Sensing and Geographic Information System, Tamil Nadu Agricultural University, Coimbatore, Tamil Nadu, India.

<sup>b</sup> Water Technology Centre, Tamil Nadu Agricultural University, Coimbatore, Tamil Nadu, India.

<sup>c</sup> Department of Agronomy, Tamil Nadu Agricultural University, Coimbatore, Tamil Nadu, India.

<sup>d</sup> Krishi Vigyan Kendra, Aruppukottai, Virudhunagar, India.

### **Authors' contributions**

*This work was carried out in collaboration among all authors. All authors read and approved the final manuscript.*

### **Article Information**

DOI: 10.9734/IJECC/2022/v12i1030924

### **Open Peer Review History:**

This journal follows the Advanced Open Peer Review policy. Identity of the Reviewers, Editor(s) and additional Reviewers, peer review comments, different versions of the manuscript, comments of the editors, etc are available here: <https://www.sdiarticle5.com/review-history/88802>

**Original Research Article**

**Received 15 April 2022**

**Accepted 26 June 2022**

**Published 28 June 2022**

### **ABSTRACT**

This study proposes an effective method to map rice area using the Sentinel-1A SAR (Synthetic Aperture Radar) time series data over the Thiruvarur district during *samba* 2021. Fully automated MAPscape-Rice software was used to pre-process the SAR data and extraction of multi-temporal features. The rice-growing area was estimated based on the extracted multi-temporal features and statistics were derived at district and block level in Thiruvarur district. The study area registered a total rice area of 127027 ha; among the blocks, the Kottur block recorded the largest area of 16615 ha and the lowest area of 6865 ha was recorded in the Thiruvarur block. The estimated rice area was validated with the observed rice area in the Thiruvarur district using accuracy assessment, which indicates an overall accuracy of 92.0 per cent and 0.84 kappa co-efficient.

<sup>Ⓞ</sup> PG Scholar,

<sup>#</sup> Director and Professor,

<sup>†</sup> Assistant Professor,

<sup>‡</sup> Professor,

<sup>‡</sup> Assistant Professor,

<sup>†</sup> Subject Matter Specialist,

\*Corresponding author: E-mail: pazhanivelans@gmail.com;

**Keywords:** Rice area; Sentinel 1A; Synthetic Aperture Radar (SAR); Validation; Accuracy assessment.

## 1. INTRODUCTION

Rice is Asia's most important food crop, accounting for over 90% of worldwide rice production and consumption. In 2021, India's rice area, production, and productivity accounted for 4.56 million ha, 12.436 million tonnes, and 2717 kg/ha, respectively [1]. Classic statistical sampling approaches based on measurements at sample fields have been widely used for rice area and yield estimation [2]. However, this approach provides only a simple but expensive estimate and is best utilised in smaller regions. Crop models based on meteorological data are used to estimate rice yield in larger areas [3,4], while the precision and accuracy of model inputs raise several concerns. Rice monitoring using remote sensing technology is timely and cost-efficient [5-7]. Instead of time-consuming and expensive conventional field surveys, standardised methodologies can be used to analyse spatial and temporal environmental changes that affect crop growth and health [8,9]. For crop area and yield estimation, the timely information is more valuable.

Remote sensing technology provides the methodologies required to monitor, map, and observe rice-growing ecosystems across large distances and at regular intervals to interpret rice-growing areas from various viewpoints [10]. This is quite useful for quick and accurate estimation of rice area. The country's economy, government and private organizations, small stockholders, farmers, insurance firms, and policymakers employ the estimation of area and yield. The optical sensors collect data only during the daytime and subjected to ambient and weather conditions, with data being influenced by cloud cover. To overcome these constraints, microwave sensors were eventually deployed because the larger wavelength can penetrate the cloud and collect the data day and night, regardless of the weather [11].

Multi-temporal images give more information about the area and crop type. Continuous field monitoring is important for accurate yield prediction and area estimation. The radar backscattering coefficient is an important parameter for rice area estimation [12]. The SAR data is freely available on the internet; hence sentinel 1A SAR satellite data maintained by European Space Agency (ESA) was used in the

study. It is especially suitable for rice crop area estimation because the high spatial and temporal resolution gives more information about the area [13].

Holecz et al. [14] developed MAPscape-RICE software, a fully automated proprietary programme that is used to analyse the SAR data and get the temporal backscatter values of VH Polarization across the rice crop. Rice detection rules are based on the rice crop's well-known temporal signature derived from Synthetic Aperture Radar (SAR) backscatter and its relationship to crop stages. This tool is helpful for rice mapping, detecting the start of the season, peak of the season, and seasonal crop growth tracking [15,16]. In addition, it is commonly used to estimate the area of important crops, including rice, maize, mango, cotton and banana [17-22]. The study's primary goal is to estimate the rice area for the Thiruvavur district of Tamil Nadu during *samba* season.

## 2. MATERIALS AND METHODS

### 2.1 Study Area

Thiruvavur district is located in Tamil Nadu, India which lies between latitude 9.28° N, longitude 79.3° E and with an altitude of 10m MSL (Fig.1) and a total area of 2,377 sq. km. The annual rainfall is 1129 mm the maximum rainfall obtained during the North East season is 665 mm (September to December). Thiruvavur district comes under the Cauvery delta region of Tamil Nadu, with temperatures ranging between 26.39°C to 35.19°C. The Southwest winds, which began in April, are at their peak in June and last until September, while the northeast monsoon starts during October and lasts until January, which accounts for over 60% of yearly rainfall. The district is dominated with sandy coastal alluvium, which accounts for 56.78 per cent of the total area. Rice is cultivated in three seasons, namely *Kuruvai* (June – August), *Samba* (August – January) and *Thaladi* (January – March). Rice is the most extensively cultivated crop in this region. During the *samba* season 2021, this research was carried out in the Thiruvavur district which consists of 10 blocks

### 2.2 Image Acquisition

A series of 11 vertical horizontal (VH) polarised Sentinel 1A, C-band ground range (GRD) images

(Table 1) were downloaded with interferometric wide swath mode at incidence angles ranging from 31 to 46 degrees and range and azimuth resolutions of 5 and 20 metres, respectively [23]. The data were acquired between 02 August 2021 to 03 January 2022 at 12 days intervals.

### 2.3 Pre-processing of SAR Data

Strip mosaicking, co-registration, time-series speckle filtering, terrain geocoding, radiometric calibration, normalization, anisotropic non-linear diffusion (ANLD) filtering, and atmospheric attenuation removal are basic pre-processing steps for SAR data [24]. These steps are performed using the fully automated processing chain module-based MAPscape-RICE software developed by Holecz et al. [14]. This module transforms temporal images into terrain-geocoded backscattering coefficient ( $\sigma^\circ$ ).

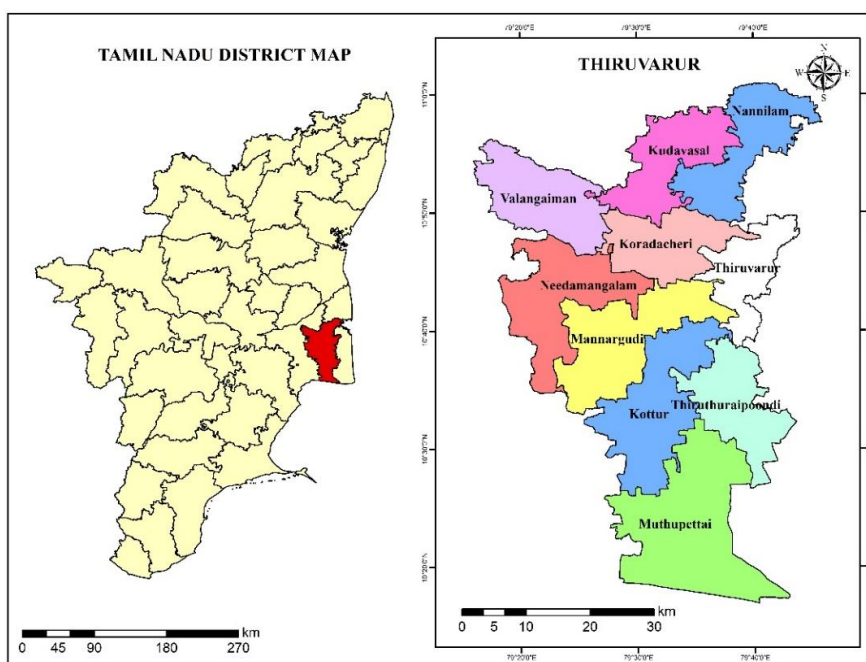
### 2.4 Rule Based rice Classification

The multi-temporal features viz., maximum, minimum, mean, and range of  $\sigma^\circ$  were computed using the temporal signature of the monitoring sites where from the (i) minimum and (ii) maximum of those mean  $\sigma^\circ$  values across fields; (iii) the maximum of the minimum  $\sigma^\circ$  values across fields; the (iv) minimum and (vi) maximum of the range of  $\sigma^\circ$  values across fields; and the (v) minimum and (vi) maximum of the range of  $\sigma^\circ$  values across fields were calculated [14]. The

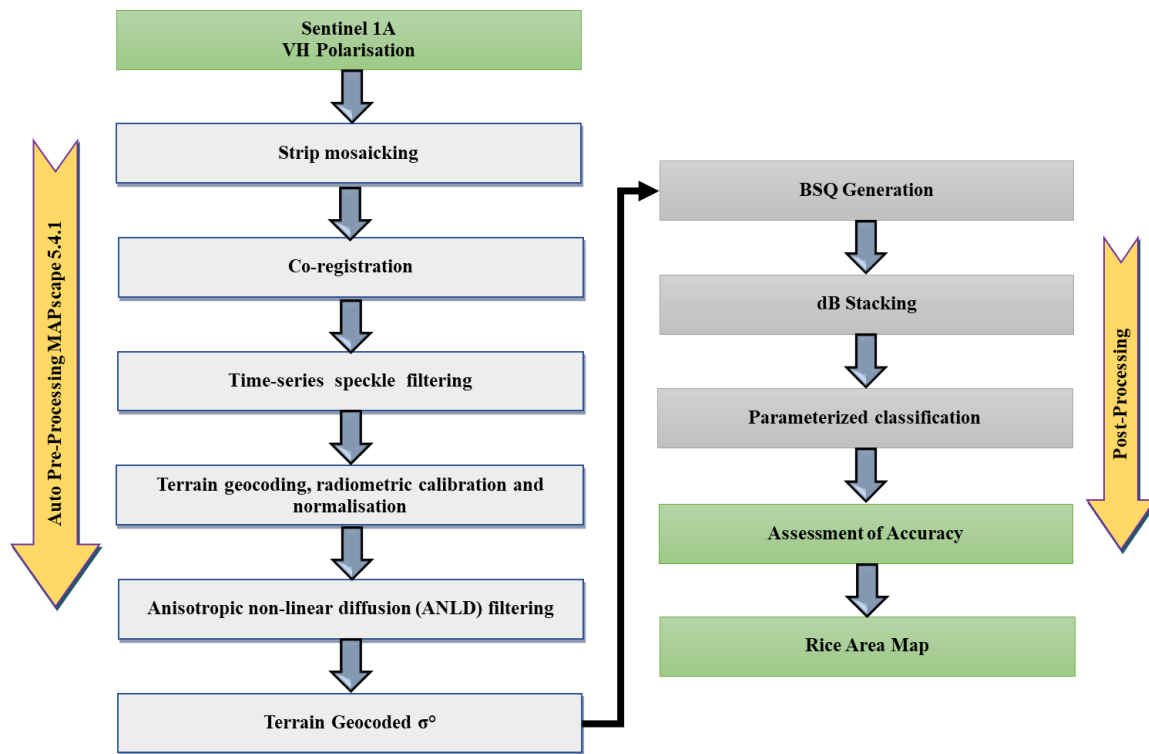
process of rice area estimation is depicted in Fig. 2. The number of days between a start-of-season detection and the next highest  $\sigma^\circ$  value in the temporal signature is limited by  $T_{minlength}$ . Since X-band  $\sigma^\circ$  saturates before rice flowering, this value can be set to 40–70 days.  $T_{maxlength}$  limits the time between two  $\sigma^\circ$  minima in the series, and 120 days was an appropriate cutoff for an intense triple-rice system (three crops in one year).  $t_2 - t_1$  is the maximum time of agronomic flooding at the start of the season, which was adjusted to a high value of 40 to 50 to capture the longest land preparation stages.

**Table 1. Sentinel 1A data acquisition dates during samba season 2021**

S.No.	Satellite Pass	Date of Satellite Pass
1.	D <sub>1</sub>	12.08.2021
2.	D <sub>2</sub>	24.08.2021
3.	D <sub>3</sub>	05.09.2021
4.	D <sub>4</sub>	17.09.2021
5.	D <sub>5</sub>	29.09.2021
6.	D <sub>6</sub>	11.10.2021
7.	D <sub>7</sub>	23.10.2021
8.	D <sub>8</sub>	04.11.2021
9.	D <sub>9</sub>	16.11.2021
10.	D <sub>10</sub>	28.11.2021
11.	D <sub>11</sub>	10.12.2021
12.	D <sub>12</sub>	22.12.2021
13.	D <sub>13</sub>	03.01.2022



**Fig. 1. Location of Study area in Tamil Nadu, India**



**Fig. 2. Rule-based rice detection algorithm from multi-temporal Sentinel 1A, C-band  $\sigma^0$  using MAPscape-RICE**

## 2.5 Ground Truth Collection

During *Samba* 2021 season, 300 ground truth rice points (Each block @ 30 points) were collected at different crop development stages in the Thiruvarur district. These ground truth points were used for training and validation, to improve the accuracy of rice area mapping. Validation sites were provided for land cover types where the SAR signature changes seasonally, such as rice and other annual crops. Locations were chosen such that the land cover was homogenous within the surrounding of 1 ha area, and locations were at least 50 m away from roads, built-up areas and other infrastructures [15,16].

## 2.6 Validation

The accuracy of the predicted rice area was validated using the Error matrix and Kappa statistics. The accuracy was compared to ground truth points. The rice area map is compared to ground truth data analysis to determine accuracy. The validation points were classified into the rice and non-rice points. The accuracy measures, such as overall accuracy, producer's accuracy, user's accuracy and kappa value, are

calculated from the error matrix [25]. The percentage of properly identified instances lying along the diagonal calculated the overall accuracy. The kappa coefficient, which measures the classifier's proportional (or percentage) improvement over a purely random assignment to classes, is another way to assess classification accuracy [26].

## 3. RESULTS AND DISCUSSION

The temporal signatures extracted to the rice validation fields were analysed for deriving the multi-temporal features aiding in rice crop detection and classification. The dB values for rice derived from the temporal signature range from -24 to -12 dB (Fig.3).

The parameters extracted from the temporal signature analysis led to the detection and estimation of the rice area in the study district. The total estimated rice area of Thiruvarur district was 127028 lakhs ha (Fig.4). Block wise statistics were performed to understand the distribution pattern of rice area among the blocks of the study area. The highest area was recorded at the Kottur block with 16615 ha, followed by Needamangalm, Mannargudi, Thiruthuraipoondi and Valangaiman, with 15445, 14064, 13862 and

13561 ha, respectively (Table.2). The lowest was recorded in the Thiruvarur block, about 6865 ha, dominated by urbanization.

### 3.1 Accuracy Assessment

The ground truth points collected during the survey were used for the accuracy assessment of the rice area estimated during the study. Out of the 250 ground truth points collected, 175

were rice points, and 75 were non rice points. A confusion matrix was generated to validate the rice area estimation and to determine the accuracy of classification [27]. Among the 175 ground truth rice points collected during *samba* season 2021, 163 points were correctly classified as rice crop. As a result, the overall accuracy of the rice area map was found to be 92.0 per cent, and the kappa co-efficient was 0.84, indicating the methodology's good accuracy (Table.3).

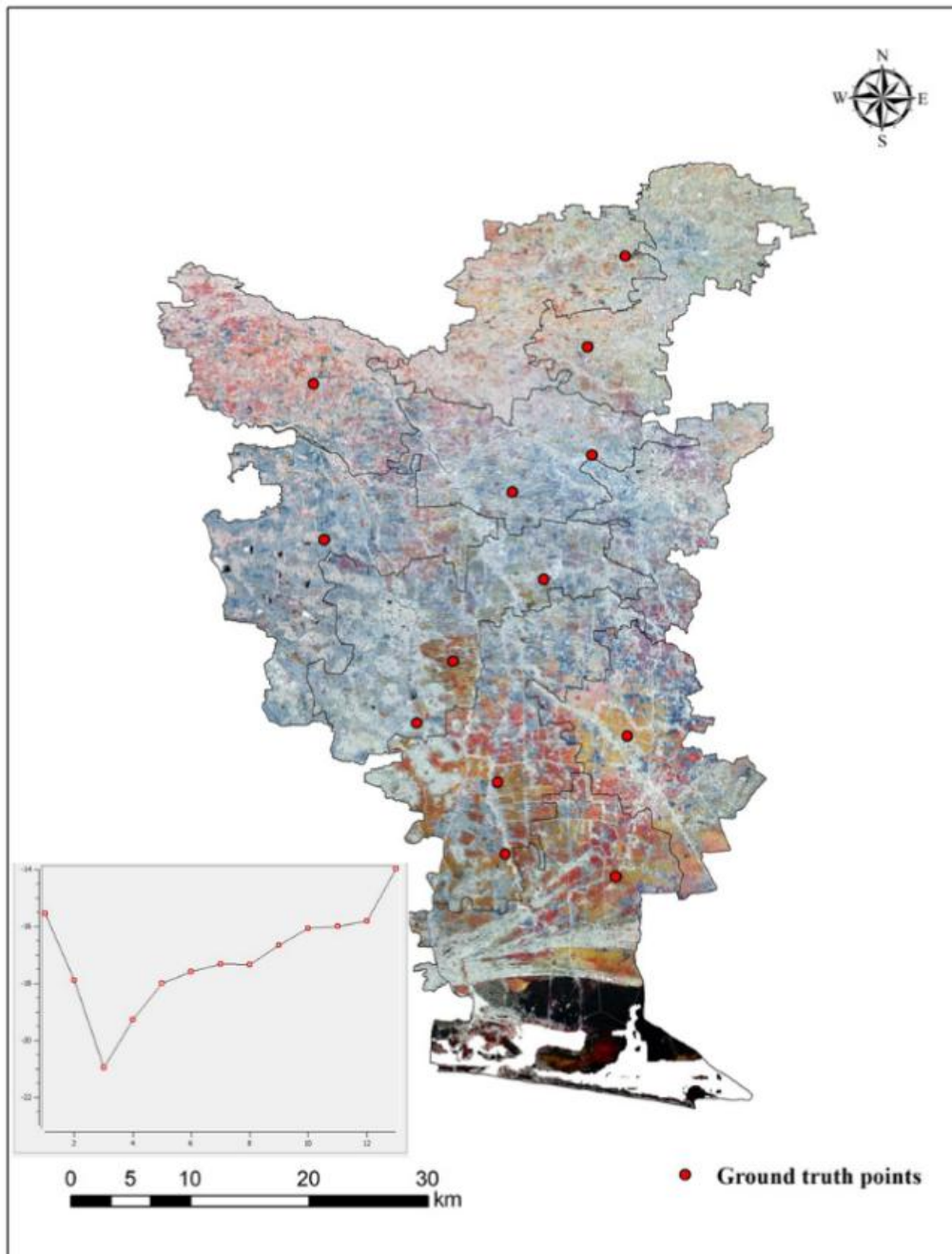


Fig. 3. BSQ - dB stack generated with Sentinel-1A SAR data

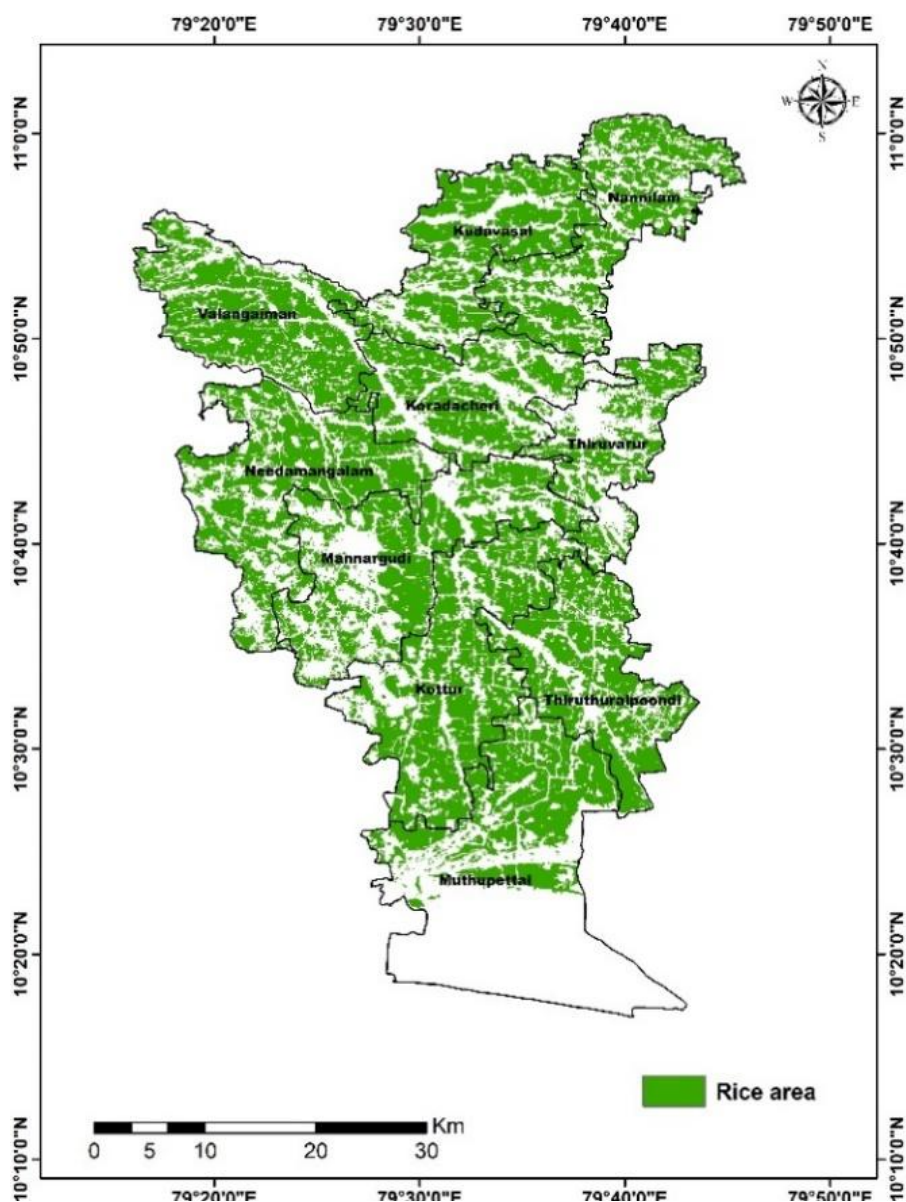


Fig. 4. Rice area map during *samba* season 2021 - 2022

Table 2. Block wise rice area for Thiruvarur district

S.No	Block Name	Area (ha)	Distribution Percentage over Rice area (%)
1	Koradacheri	10213	8.04
2	Kottur	16615	13.08
3	Kudavasal	11931	9.39
4	Mannargudi	14064	11.07
5	Muthupettai	11992	9.44
6	Nannilam	12482	9.83
7	Needamangalam	15445	12.16
8	Thiruthuraipoondi	13862	10.91
9	Thiruvarur	6865	5.40
10	Valangaiman	13561	10.68
<b>Total Area</b>		<b>127028</b>	<b>100.00</b>

**Table 3. Confusion matrix for accuracy assessment of rice classification**

Actual class from survey	Predicted class from the map			Accuracy (%)
	Class	Rice	Non-Rice	
Rice		163	12	93.1
Non-Rice		8	67	89.3
Reliability		95.3%	84.8%	<b>92.0</b>
Average accuracy		91.2%		
Average reliability		90.1%		
Overall accuracy		<b>92.0%</b>	<b>Good Accuracy</b>	
Kappa index		<b>0.84</b>	<b>Good Accuracy</b>	

#### 4. CONCLUSION

The methodology adopted for the estimation of rice area in Thiruvavur district of Tamil Nadu was found to be effective in detection, delineation and estimation which was evident from the high classification accuracy of 92.0 per cent and a kappa coefficient was 0.84. The SAR satellite data is ideal for timely area mapping due to weather and time independence. The results derived will be of much use in policy decisions due to its high accuracy.

#### ACKNOWLEDGEMENT

The authors are thankful to the Department of Remote Sensing and GIS for providing the fund through the Indo German GIZ – ICRI Project Innovative Climate Risk Insurance scheme to carry out the research work in a project mode and like to extend our sincere thanks to Professor and Head and staff members for their valuable comments and constructive suggestions on the manuscript.

#### COMPETING INTERESTS

Authors have declared that no competing interests exist.

#### REFERENCES

1. Indiastat; 2021. Available: <https://www.indiastat.com/table/agriculture/area-under-cultivation-foodgrains-india-1950-1951-7417>.
2. Murthy CS, Thiruvengadachari S, Raju PV, Jonna S. Improved ground sampling and crop yield estimation using satellite data. *International Journal of Remote Sensing*. 1996;17(5):945–956.
3. Mahmood R. Air temperature variations and rice productivity in Bangladesh: A comparative study of the performance of the YIELD and the CERES-Rice models. *Ecological Modelling*. 1998;106(2–3):201–212.
4. Subash N, Ram Mohan HS. Evaluation of the impact of climatic trends and variability in rice-wheat system productivity using cropping system model DSSAT over the Indo-Gangetic Plains of India. *Agricultural and Forest Meteorology*. 2012;164:71–81.
5. Tennakoon SB, Murty VVN, Eiumnoh A. Estimation of cropped area and grain yield of rice using remote sensing data. *International Journal of Remote Sensing*. 1992;13(3):427–439.
6. Chang KW, Shen Y, Lo JC. Predicting rice yield using canopy reflectance measured at booting stage. *Agronomy Journal*. 2005;97(3):872–878.
7. Wang LF, Kong JA, Ding KH, Le Toan T, Ribbes F, Floury N. Electromagnetic scattering model for rice canopy based on Monte Carlo simulation. *Progress in Electromagnetics Research*. 2005;52:153–171.
8. Fang H, Wu B, Liu H, Huang X. Using NOAA AVHRR and Landsat TM to estimate rice area year-by-year. *Int. J. Remote Sens*. 1998;19:521–525.
9. Moulin S, Alberte Bondeau, R. Delecolle. Combining agricultural crop models and satellite observations: from field to regional scales." *International Journal of Remote Sensing*. 1998;19(6): 1021-1036.
10. Kuenzer C, Knauer K. Remote sensing of rice crop areas. *International Journal of Remote Sensing*. 2013;34(6):2101-2139.

11. Nihar M, Ashmitha J, Mohammed Ahamed, S. Pazhanivelan, R. Kumaraperumal, K. Ganesh Raj. Estimation of cotton and maize crop area in Perambalur district of Tamil Nadu using multi-date sentinel-1A SAR data." *The International Archives of Photogrammetry, Remote Sensing and Spatial Information Sciences*. 2019;42:67-71.
12. He Ze, Shihua Li, Yong Wang, Leiyu Dai, and Sen Lin. "Monitoring rice phenology based on backscattering characteristics of multi-temporal RADARSAT-2 datasets. *Remote Sensing*. 2019;10(2): 340.
13. Bazzi, Hassan, Nicolas Baghdadi, Mohammad El Hajj, Mehrez Zribi, Dinh Ho Tong Minh, Emile Ndikumana, Dominique Courault, and Hatem Belhouchette. "Mapping rice rice using Sentinel-1 SAR time series in Camargue, France. *Remote Sensing*. 2019;11(7):887.
14. Holecz F, Barbieri MFL, Collivignarelli A, Gatti TDM, Nelson, G. Setiyono, Boschetti, P.A.B. Manfron and J.E. Quilang. An operational remote sensing based service for rice production estimation at national scale. *Proceedings of the living planet symposium*; 2013.
15. Raviz J, Mabalay MR, Laborte A, Nelson A, Holecz F, Quilang EJ, Doverte M. Mapping rice areas in Mindanao using the first images from Sentinel-1A: The PRISM Project experience. In: *36th Asian Conference on Remote Sensing (ACRS)*, Manila. 2015;19-23.
16. Raviz, Jeny, Mary Rose Mabalay, Alice Laborte, Andrew Nelson, Francesco Holecz, Eduardo Jimmy Quilang, Massimo Barbieri et al. "Mapping rice areas in Mindanao using the first images from Sentinel-1A: The PRISM Project experience. In *36th Asian Conference on Remote Sensing (ACRS)*, Manila. 2015;19-23.
17. Pazhanivelan S, Kannan P, Mary PCN, Subramanian E, Jeyaraman S, Nelson A, et al. Rice crop monitoring and yield estimation through COSMO Skymed and Terra SAR-X: A SAR-based experience in India. *The International Archives of Photogrammetry, Remote Sensing and Spatial Information Sciences*. 2015;40(7):85-92.
18. Sudarmanian NS, Pazhanivelan S, Panneerselvam S. Estimation of methane emission from rice fields using SAR and MODIS satellite data. *Journal of Agrometeorology*. 2019;21 (1):102-109.
19. Setiyono TD, Quicho ED, Holecz FH, Khan NI, Romuga G, Maunahan A, Mabalay MRO. Rice yield estimation using synthetic aperture radar (SAR) and the ORYZA crop growth model: development and application of the system in South and South-east Asian countries. *International Journal of Remote Sensing*. 2019;40(21):8093-8124.
20. Venkatesan M, Pazhanivelan S, Sudarmanian NS. Multi-temporal feature extraction for precise maize area mapping using time-series Sentinel 1A SAR data. *International Archives of the Photogrammetry, Remote Sensing & Spatial Information Sciences*. 2019;XLII-(3/W6):169-173.
21. Kaliaperumal R, Pazhanivelan S, Ramalingam Kumaraperumal, Raman, M. Mapping mango area using multi-temporal feature extraction from Sentinel 1A SAR data in Dharmapuri, Krishnagiri and Salem districts of Tamil Nadu. *Madras Agricultural Journal*. 2019;106(10-12): 647-651.
22. Tamilmounika R, Pazhanivelan S, Ragunath KP, Sivamurugan AP, Sudarmanian NS, Kumaraperumal R, Thirumeninathan S. Paddy area estimation in Cauvery Delta Region Using Synthetic Aperture Radar. *International journal of Environment, Ecology and Conservation*. 2022;S517-S522.
23. Torres R, Snoeij P, Geudtner D, Bibby D, Davidson M, Attema E, Potin P, et al. GMES Sentinel-1 Mission." *Remote Sensing of Environment* 120:9–24. *The Sentinel Missions - New Opportunities for Science*; 2012.
24. Nelson A, Setiyono T, Rala AB, Quicho ED, Raviz JV, Abonete PJ, et al. Towards an operational SAR-based rice monitoring system in Asia: Examples from 13 demonstration sites across Asia in the RIICE project. *Remote Sensing*. 2014;6(11): 10773-10812.
25. Congalton RG. A review of assessing the accuracy of classifications of remotely sensed data. *Remote Sensing of Environment*. 1991;37(1):35-46.
26. Richards JA. *Remote Sensing Digital Image Analysis*. Springer, Heidelberg, New York; 1993.



27. Stroppiana D, Boschetti M, Azar R, Barbieri M, Collivignarelli F, Gatti L, Holecz F. In- season early mapping of rice area and flooding dynamics from optical and SAR satellite data. European Journal of Remote Sensing. 2019;52(1): 206-220

---

© 2022 Satheesh et al.; This is an Open Access article distributed under the terms of the Creative Commons Attribution License (<http://creativecommons.org/licenses/by/4.0>), which permits unrestricted use, distribution, and reproduction in any medium, provided the original work is properly cited.

*Peer-review history:*

*The peer review history for this paper can be accessed here:  
<https://www.sdiarticle5.com/review-history/88802>*